

Survey Monkey Data on the Desire for Child Care  
Quincy Public Schools HR Committee  
(C. Nichols)

This survey was conducted during the month of May, 2016. It was open to all QPS employees who might have been interested in having before or after school Child Care.

RESULTS:

Background: There are about 1,200 full time employees.

From our CES Insurance Master Enrollment List, QSD has 226 children enrolled in its insurance plan **ages 12 and under**. Of this 226, about 162 are perhaps between the ages of 5 and 12.

THIS DOES NOT REPRESENT all of the aged 12 and under children of parents who work for QSD. Not all employees are insured here. 168 (or so) respondents expressed an interest in child care.

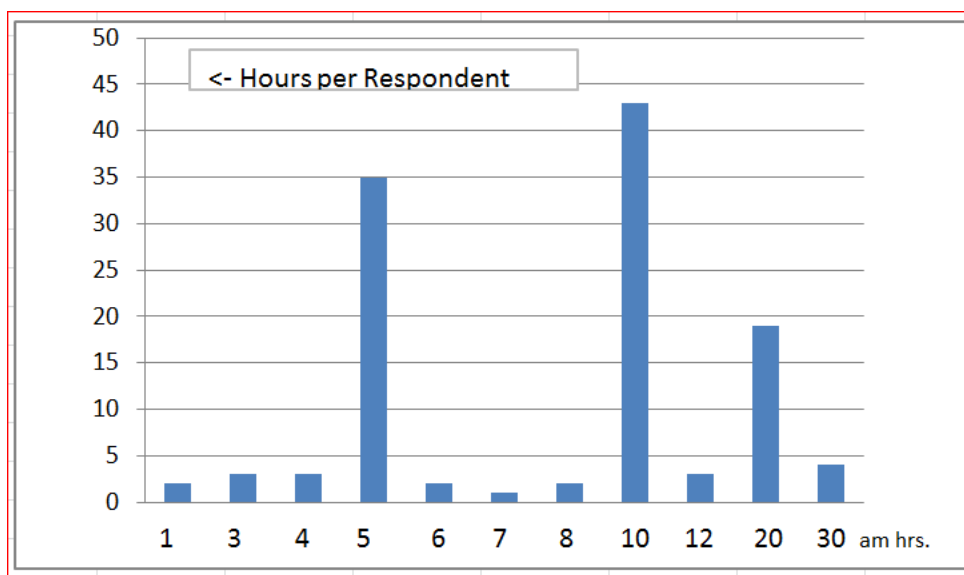
**Question I - 388 people responded.** Those with children who might want or do want childcare before or after school = 43% of the total. Remember – we have about 226 + children ages 12 and under in our insurance plan, with about 162 + eligible for the pre and after school child care discussed in this survey.

Childcare Y	127	32.73%
Childcare N	220	56.7%
CC - Maybe	41	10.57%
	388	100%

**Question II – Hours requested before school.**

Responding YES = 117

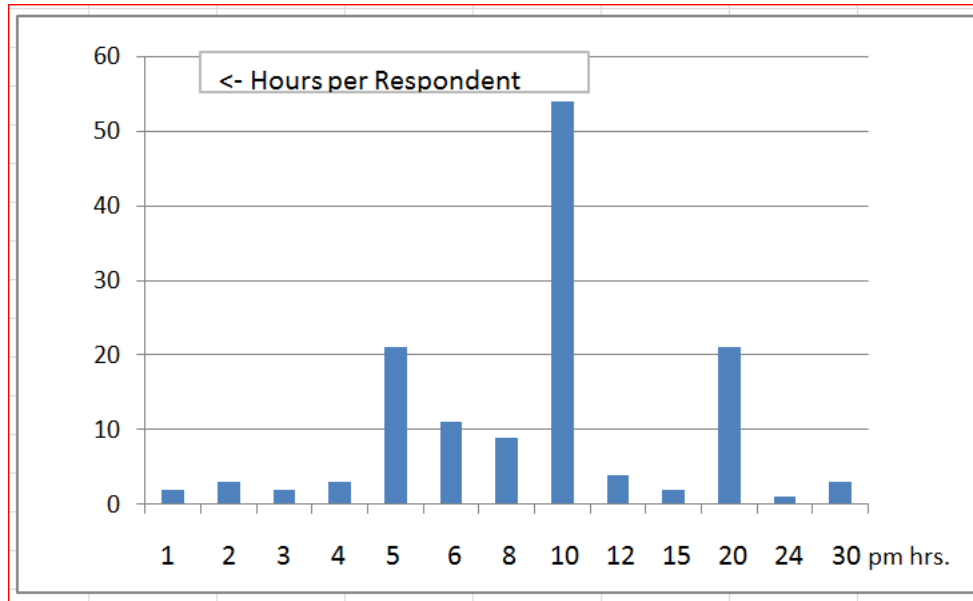
Total number of HOURS REQUESTED = 1,199. Average per respondent = 10.25 hours/week



**Question III – Hours requested after school.**

Responding YES = 136

Total number of HOURS REQUESTED = 1,421. Average per respondent = 10.45 hours/week



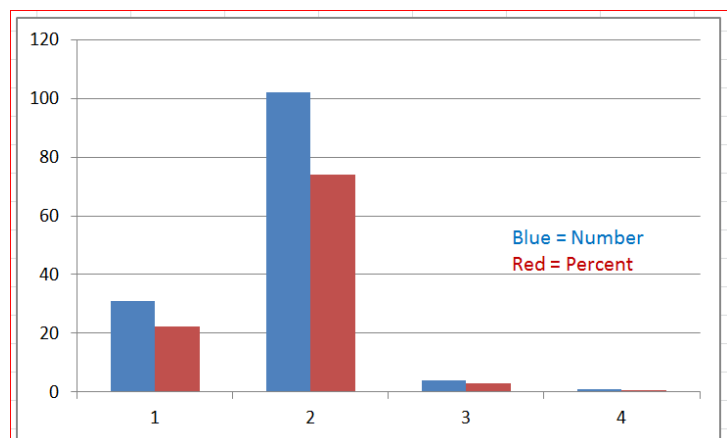
**Question IV – The Total Number of Persons who were interested in Pre- and After School Child Care**

(Respondents could show interest in one or both).

Pre School	119	72.56%
After Sch.	150	91.46%

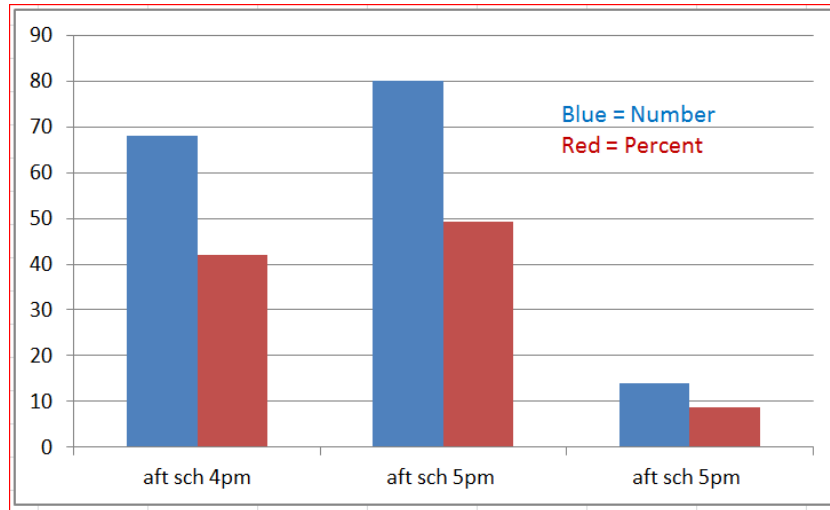
**Question V – What time would you prefer starting Child Care in the morning?**

pre sch 6am	31	22.46%
pre sch 7am	102	73.91%
pre sch 8am	4	2.9%
pre sch 9am	1	0.72%
	138	100%



**Question VI – What time would you prefer picking up your child from Child Care in the afternoon?**

aft sch 4pm	68	41.98%
aft sch 5pm	80	49.38%
aft sch 5pm	14	8.64%
	162	100%



**Question VII – Would you prefer having the child(ren) at your school? Would you mind going elsewhere?**

can go elsew	67	40.36%
be at my sch	4	2.41%
depends	95	57.23%
	166	100%

**Question VIII – How many children do you have who would use this service now? REMEMBER – we are asking about pre-K to about 12 years old at this time.**

Our guesstimate from our CES Insurance Enrollment Data suggests about 162 + children are between the ages of 5 and 12. The data below says that are respondents are concerned with about 224 children. So, we are getting responses from people who have family insurance with other companies, but who work for the QSD.

one child	93	61.18%
two	48	31.58%
three	10	6.58%
four	0	
five +	1	0.66%
	152	100%

**Question IX - What do you pay from Child Care per hour?**

These answers assume that there may be one or more children calculated in the hourly rate. This comes to about \$7 per hour with last amount being hard to average in and estimate.

<\$5	67	50.76%
\$6 to 7	28	21.21%
\$7 to 8	8	6.06%
\$8 to 9	15	11.36%
Over \$10	14	10.61%

**Question X – If we could expand this service, what would you like to see offered?**

(People could choose more than one).

All day day care for younger pre-school children (not newborn or toddlers).	<b>56.20%</b> 77
Newborn and toddlers.	<b>60.58%</b> 83
Summer - all day school age	<b>27.74%</b> 38
Summer - all day pre-school (not newborn or toddler)	<b>10.95%</b> 15
Summer - newborn and toddlers	<b>14.60%</b> 20
One or more of my children has special needs	<b>5.84%</b> 8
Total Respondents: 137	